

Proposal for an **Urban Forest** for the West End Residential Area

BACKGROUND

To make the modern city more liveable, sustainable and enjoyable, we need to find solutions which go beyond engineering, and which are more natural and wholistic.

The proposed **Urban Forest** in the north-west corner of Adelaide's CBD aims to do this by confronting issues facing all modern cities - traffic overload, water wastage, human discomfort, aesthetic degradation and weather extremes.

The north-west corner of Adelaide was the first part of Adelaide to be built upon. It was also the most densely populated part of Adelaide for many years. After WW2, the area became very commerce-focussed, particularly towards the motor trade.

In the last decade, the tide has turned and this area is again characterised as residential, - a few remnant heritage dwellings, tall and not-so-tall apartments, townhouses and flats, although now surrounded by large institutions like UniSA and the new RAH, replacing the breweries and foundries of the past.

WHAT IS THE URBAN FOREST?

Unlike other parts of the City, this area is a blank canvas for establishing an exemplary environmentally sustainable approach to city living because it has been neglected for so long. The Urban Forest proposal involves simple landscaping techniques, some new and some that have been successfully implemented in other parts of Adelaide for years.

What is new is the **scale and intensity** of the proposal. This is not a suburban replication of street trees in footpaths with nature strips. It's much more than the landscaping solutions of north or south-east Adelaide which focus on beautification. The tree-planting proposal is the beginning of an integrated green infrastructure that could include micro-parks, permeable paving, green corridors, flexible coverings, street lighting for pedestrians, not cars.



HAS THERE BEEN COMMUNITY CONSULTATION?

The West End Village Association (WEVA) was established in 2013 as a voice for residents of this area. One continuing concern has been traffic management, exacerbated by recent developments. A plan indicating a range of traffic calming solutions was discussed by WEVA in early 2013. This earlier plan was subsequently modified with a focus on its landscaping and tree planting elements, rather than traditional traffic engineering solutions. It was considered that traffic calming could be achieved through tree planting, plus returning many other positive benefits.

WHAT WILL THE URBAN FOREST LOOK LIKE?

The Urban Forest proposal will look like nature has reclaimed the built environment. It will promote the notion that the natural world should be, and can be, the most important determinant of the urban environment.

HOW MANY CARPARKS WILL BE REMOVED?

None

HOW WILL TRAFFIC BE CALMED?

By introducing trees into the area, streets will be narrowed and changed in character. Traffic will be slowed and diverted, in time leading to a more sustainable and beautiful precinct.

HOW WILL OTHER IMPROVEMENTS FIT INTO THE AREA IN THE FUTURE?

Trees are a minimal infrastructure intervention and 'temporary' so any future improvements can easily be accommodated.



Proposal for an **Urban Forest** for the West End Residential Area for **WEVA**

Issue: A
Scale: as shown @A3
Date: 20/05/14
Drawing No.: P147/SK01

© SLD Architects Pty. Ltd.

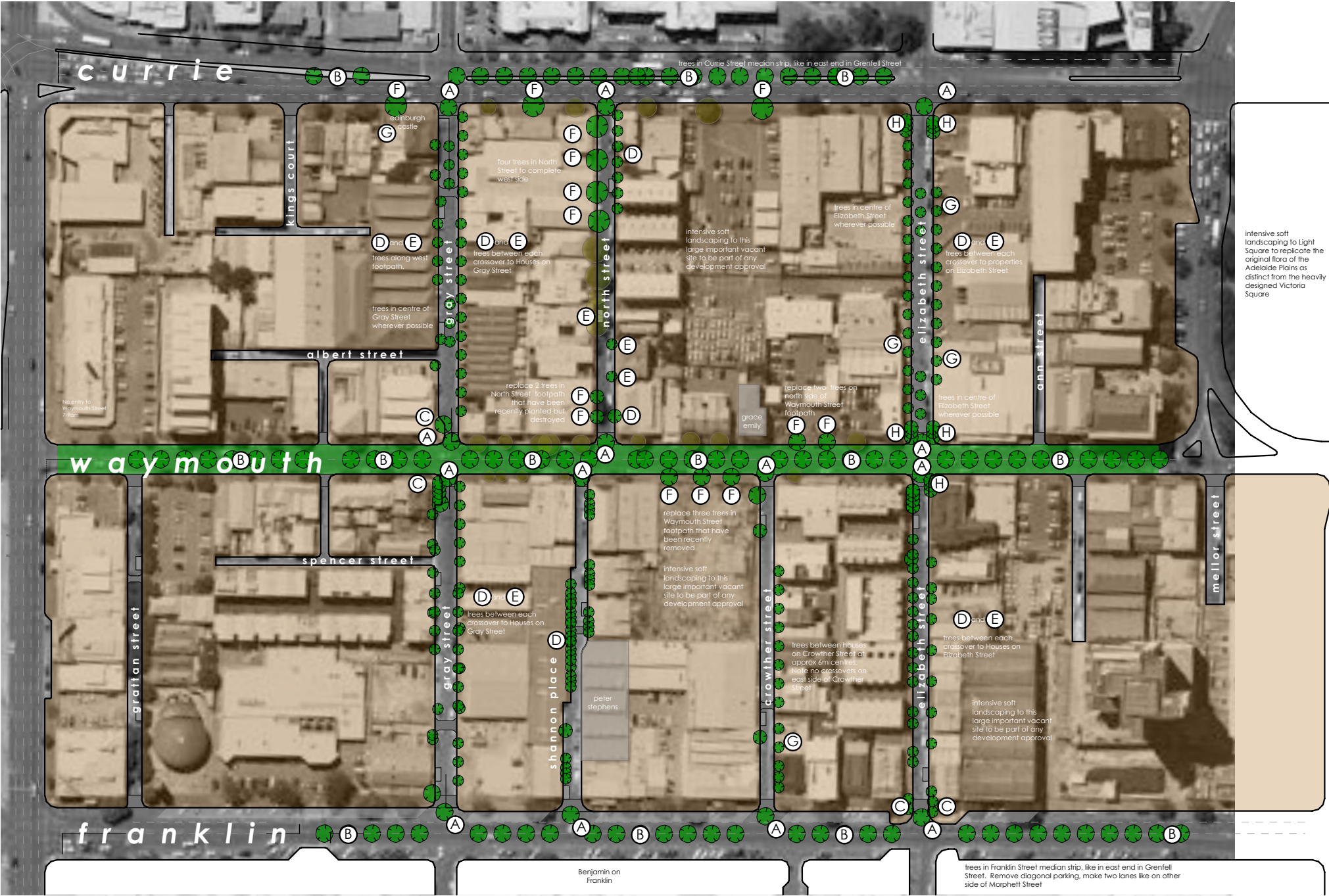
S L D
Architects

A: 32 North Street, Adelaide 5000
T: (08) 8212 3401
E: office@sldarchitects.com.au
W: sldarchitects.com.au

west end residential area plan

1:2000

The location of trees is generally indicative and requires confirmation of underground services.



TREE LEGEND

- A : Trees planted at each main/minor street intersection to match existing main street trees. Total number 14
B : Trees planted in centre of Waymouth, Franklin and Currie streets at 2 or 3 metre centres. Total number 150
C : Trees planted in footpaths where footpaths already widened. Total number 20
D : Trees planted in existing footpath. Total number 120

- E : Trees planted in road adjacent existing carparks. Total number 50
F : Trees planted to replace previously removed or to complete street landscaping. Total number 8
G : Trees planted along street where multiple crossovers. Total number 15
H : Trees planted where footpath widened. Total number 30

TOTAL NUMBER OF TREES OF VARYING SPECIES : 400

As a result of recent developments in Adelaide's CBD, traffic numbers have increased and traffic patterns have changed in the **West End**.

These developments include

1. Currie Street bus lanes
2. Hindley Street narrowing adjacent to UniSA.
3. new RAH Hospital on North Terrace
4. tramline along North Terrace
5. Victoria Square redevelopment
6. Adelaide High School Additions

This proposal for an **Urban Forest** has two fundamental purposes

1. to make the area greener, healthier and more beautiful.
2. to calm vehicular traffic and promote a pedestrian and cycle friendly area.

Rather than adopting traditional engineering solutions (**grey solutions**: speed humps, one-way streets etc.) mass tree plantings are proposed: **green solutions**. By narrowing roads, by signifying entrances into a residential area and by encouraging pedestrians and cyclists, traffic will be naturally calmed.

The mass plantings are not intended as a typical suburban landscaping solution of nature strips with one tree per property. Rather the intention is that a tree is planted wherever possible. All the proposed planting measures have been successfully carried out in other places in Adelaide, but perhaps not all together in one area. That is what will make the West End Urban Forest unique.

Other measures, such as
40 km zone signs,
road murals,
two lanes both ways on Franklin Street,
continuous footpaths and
removal of kerbs in minor streets to make shared zones
will complement the traffic calming and beautification qualities of the West End Urban Forest.



Proposal for an **Urban Forest** for the West End Residential Area for **WEVA**

Issue: **B**
Scale: as shown @A3
Date: 20/08/14
Drawing No.: P147/SK02

© SLD Architects Pty. Ltd.

S L D
Architects

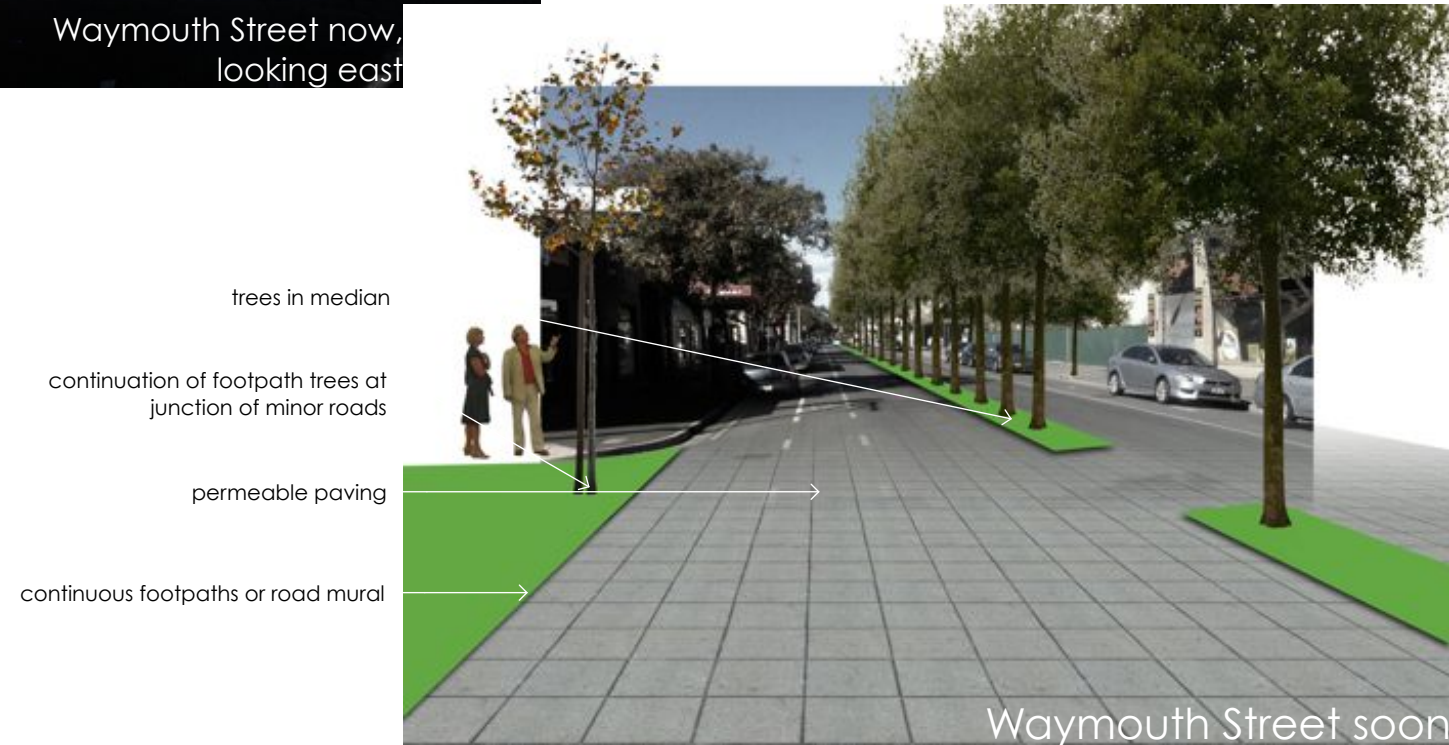
A: 32 North Street, Adelaide 5000
T: (08) 8212 3401
E: office@sldarchitects.com.au
W: sldarchitects.com.au



Waymouth Street now,
looking east



Waymouth Street now,
looking west





Currie Street now

trees where double
crossovers

trees in centre of
minor road junction

trees in median like in
east end on Grenfell St.



Currie Street soon



North Street now

trees in widened footpath:
no carparks lost

trees on footpath to complete street
landscaping



North Street soon



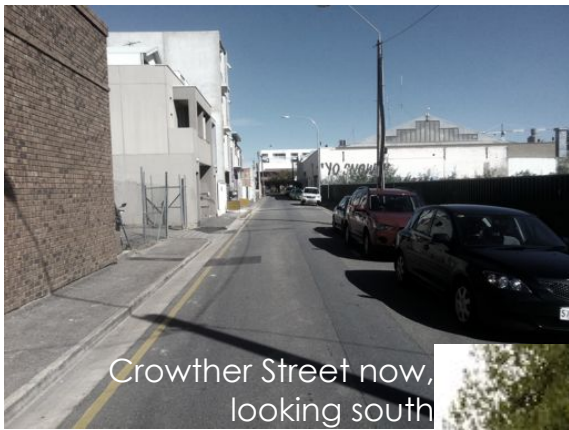
north Gray Street now

trees in footpath between crossovers

trees in centre of road



north Gray Street soon

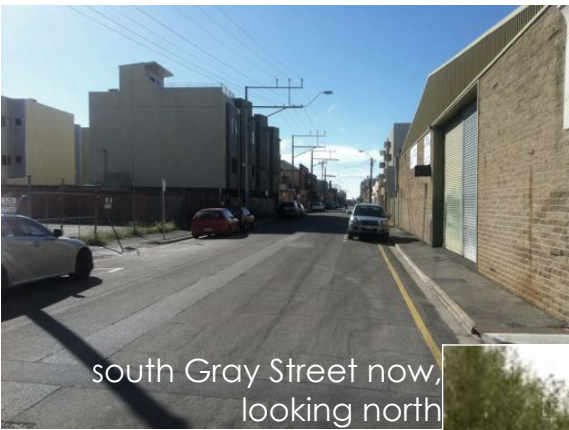


Crowther Street now,
looking south



trees on footpath

Crowther Street soon



south Gray Street now,
looking north



trees in footpath

trees in centre of road

south Gray Street soon



south Elizabeth Street now,
looking south



trees on footpath

south Elizabeth Street soon